



Tall Tree Wind Farm Draft Scoping Requirements Webinar



7 May 2026

Session objectives and expectations

Session Overview

- This webinar provides information on the Draft Scoping Requirements (DSR) for the proposed Tall Tree Wind Farm Environment Effects Statement (EES).
- The DSR, prepared by the Department of Transport and Planning (DTP), outlines key matters to be assessed in the EES.
- The session aims to:
 - Support community understanding of the DSR and EES process
 - Explain how to make a submission

About the Session

- Presented by DTP representatives, overseeing the EES process
- Questions can be submitted anytime via the Q&A chat
- Responses will be provided after the presentation; additional time allocated if needed
- Unanswered or out-of-scope questions will be followed up via email and online

Additional Information

- Please engage **respectfully** throughout the session – see Respectful Behaviour Policy on the community hub
- Ongoing community engagement will continue as the project progresses
- This session is **recorded** and will be available on the **Community Hub**



ACCIONA Energía acknowledges the Traditional Custodians of country throughout Australia and their connections to land, sea and community.

We acknowledge the Wadawurrung People as the Traditional Custodians of the lands on which the Tall Tree Wind Farm is proposed to be located.

We pay our respect to Elders past and present and extend that respect to all Aboriginal and Torres Strait Islander peoples.



AGENDA

- 1** Welcome
Facilitator, Premier Strategy

- 2** Overview of the Project & EES process involvement
Paul Treasure - Project Manager, ACCIONA Energía

- 3** Outline of Draft Scoping Requirements
*Ruth Davies – Senior Impact Assessor, Impact Assessment Unit.
Department of Transport and Planning (DTP)*

- 4** Questions and Answers
*DTP (Impact Assessment Unit)
Mott MacDonald (Consultants, Technical Reports)*

The Project

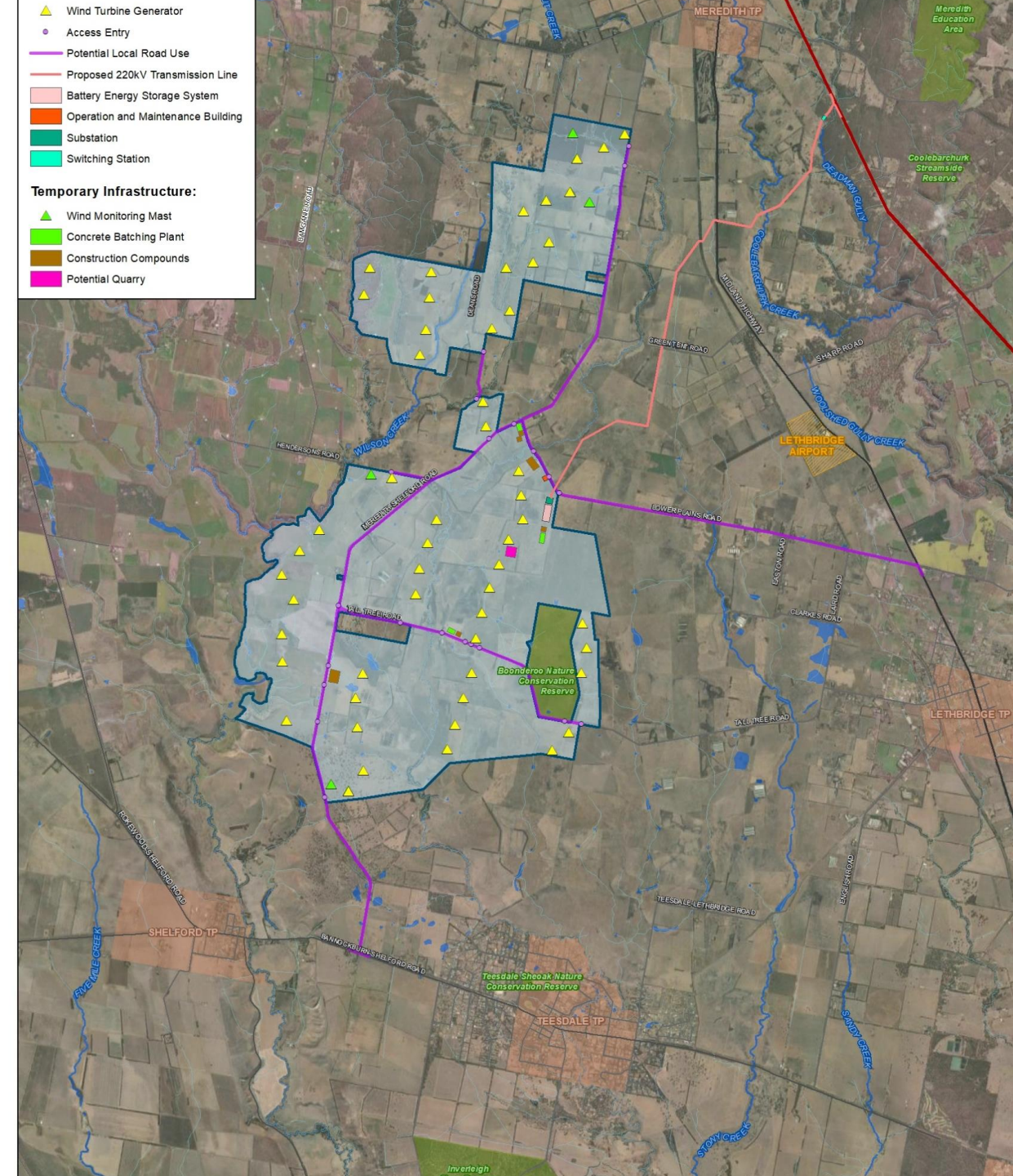
- 53 turbines
- 360 MW wind turbine capacity
- 11.3 KM Transmission line
- Battery Energy Storage System (up to 800 MWhrs)

An Environment Effects Statement (EES) **is required** for the Tall Tree Wind Farm

Controlled action under the Environment Protection and Biodiversity Conservation Act 1999 (EPBC).

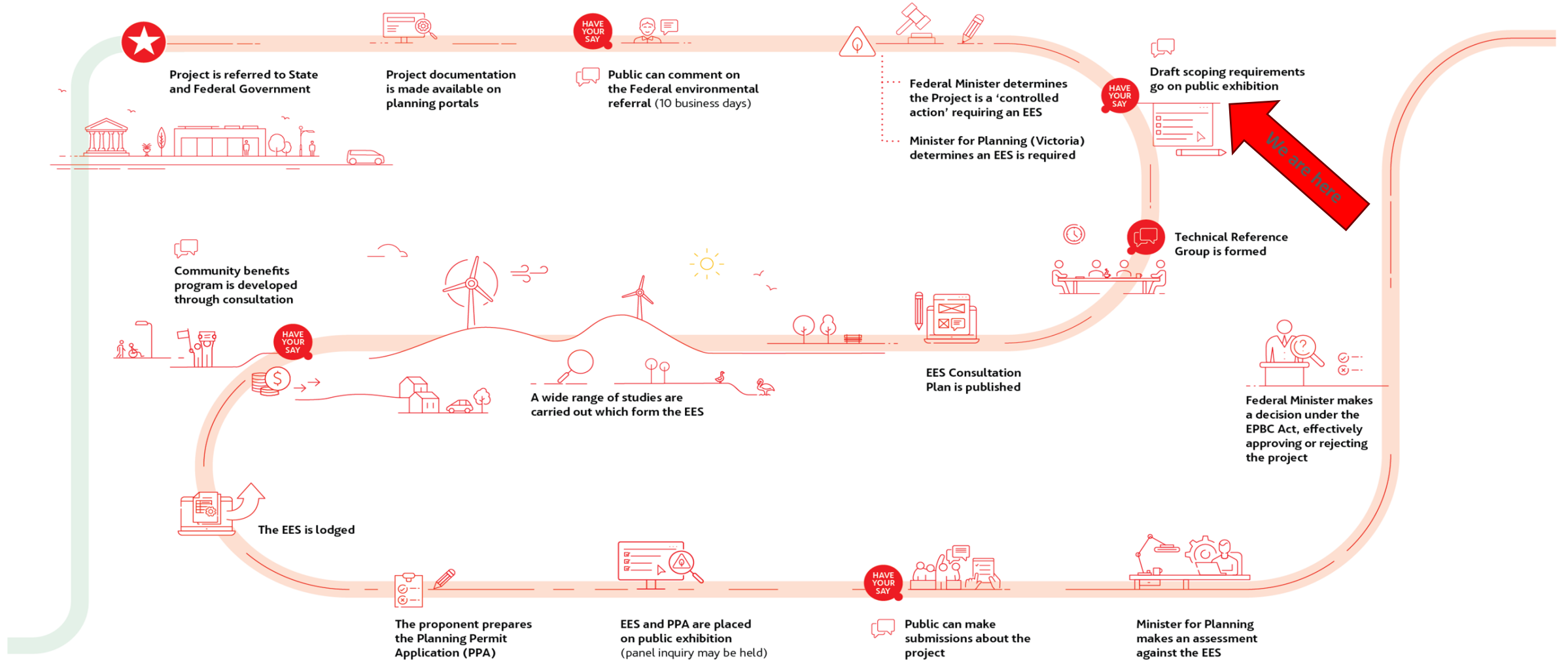
Timeframes:

- 2026-2027 Assessments and Approvals
- 2028 anticipated Construction
- 2030 anticipated Operations



PROJECT TIMELINE*

REFERRAL AND ENVIRONMENT EFFECTS STATEMENT (EES)



Community and stakeholder engagement continues throughout the life of the project

Environment effects statement (EES)

process &

Tall Tree Wind Farm Draft EES

Scoping Requirements



Department
of Transport
and Planning

Environment Effects Act 1978

- EES process provides the **highest level of environmental assessment in Victoria**.
- Applies to proposed projects (works) with potential for “**significant effects**” on the environment*. It is not triggered by the type of project, rather its *potential for significant effects*.
- EES is an **assessment process** to provide authoritative advice to statutory decision makers (it is not an approval).
- EESs are **accredited assessments** under the *Environment Protection and Biodiversity Conservation Act 1999* (Cwth) (EPBC) Bilateral Agreement with the Commonwealth.

Ministerial guidelines for assessment
of environmental effects under the
Environment Effects Act 1978



Eighth edition, 2023

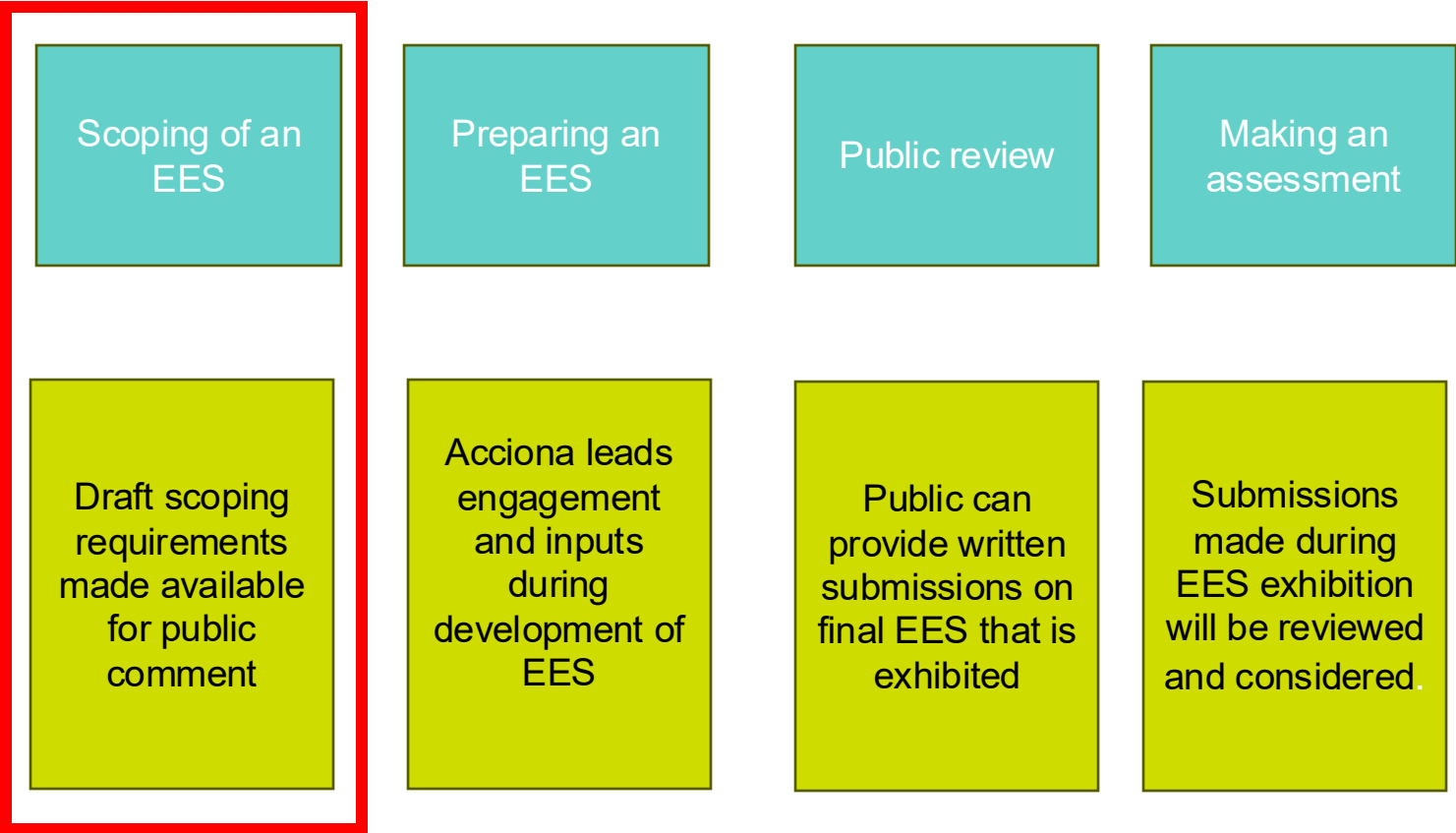


Department
of Transport
and Planning

EES process overview



Consultation during the EES process



Scoping an EES (DTP/ Minister)

- The EES scoping requirements set the **matters to be investigated and documented** in a proponent's EES.
- This is the scope of an EES and is developed by the department and issued by the Minister.
- The draft scoping requirements are exhibited for public comment for 15 business days. **This is the public's opportunity to comment on the scope of the EES.**
- The draft scoping requirements are published on **Engage Victoria**.
- The department then updates and finalises scoping requirements having considered submissions.
- Once approved by the Minister, the EES scoping requirements are made publicly available on the department website.

Draft EES scoping requirements

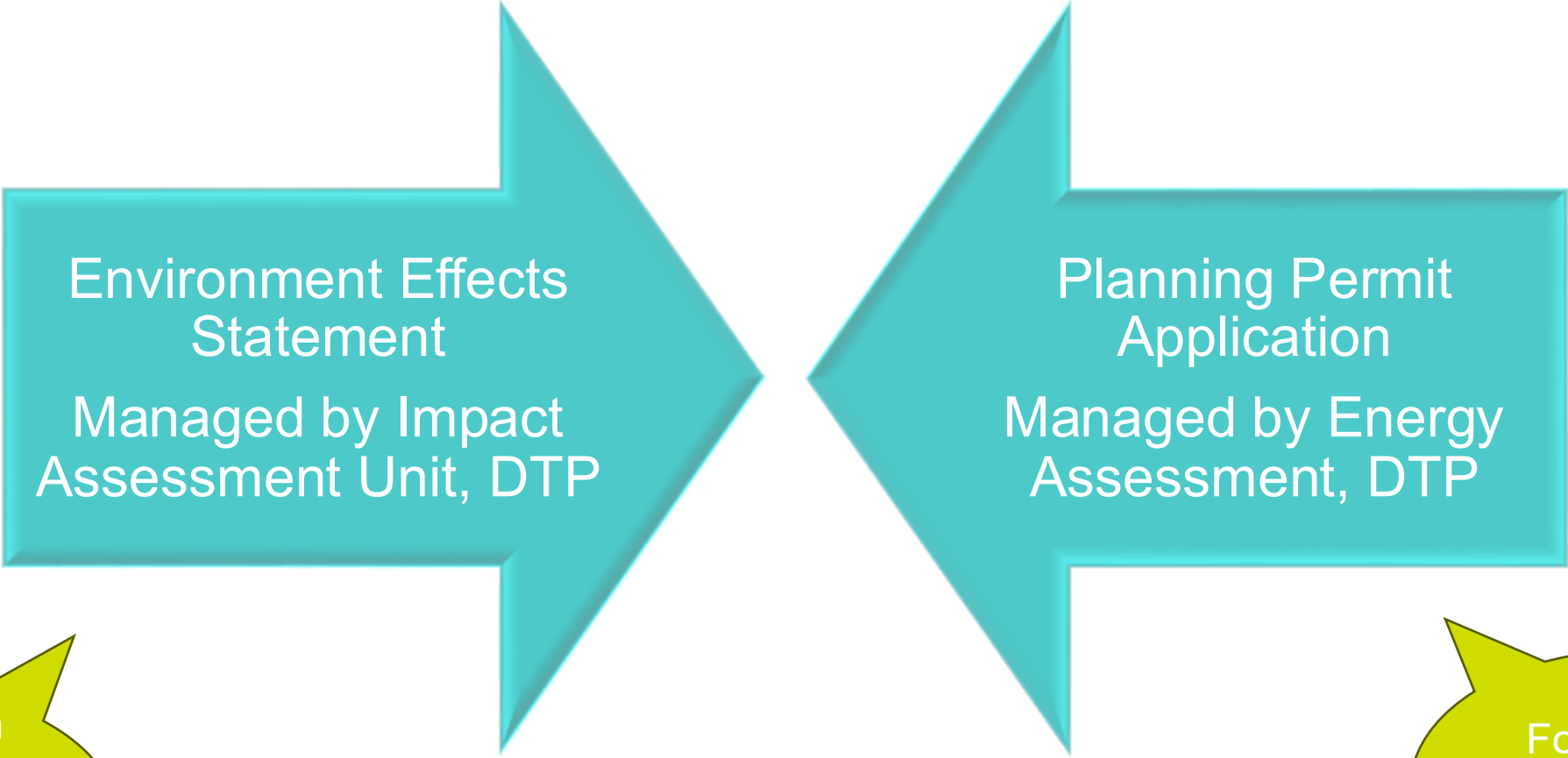
- Draft scoping requirements are informed by:
 - The Minister for Planning's published decision and reasons for the EES (key matters)
 - Information provided by the proponent, including a draft EES study program and risk-screening.
 - Technical agency advice, including Commonwealth advice in relation to relevant EPBC matters
- The draft scoping requirements include:
 - Information on the EES process
 - Guidance on the approach to developing an EES,
 - Guidance on content and format of the EES
 - Potentially significant effects and priorities for EES investigations.
- Current approach to EES scoping requirements places greater emphasis on a risk-based approach, to improve the focus of assessment documents on key matters.

Minister's EES decision for Tall Tree Wind Farm

The investigations and assessments in the EES are to include feasible project alternatives and design refinements (e.g. alternative project layouts, siting of infrastructure, management measures, project staging and timing and/or extent of inundation events) to avoid, minimise, and manage effects, particularly for:

- threatened species and ecological communities listed under the *Flora and Fauna Guarantee Act 1988* and *Environment Protection and Biodiversity Conservation Act 1999*
- native vegetation and ecology of the area's terrestrial environments, including conservation reserves
- values of freshwater environments, including wetlands and creeks and groundwater dependent systems; and
- cultural and landscape values.

Approval pathways



Focuses on potentially significant environmental effects

Focuses on land use planning

Technical Reference Group

A Technical Reference Group (TRG) is established by DTP to help during the EES process.

TTG includes particular agencies with a relevant technical, regulatory or policy interest, in line with the key matters/ potentially significant effects.

The role of a TRG is to advise the DTP and proponent on matters that should be examined (EES scope), the technical adequacy of proponent's EES studies and proponent's draft EES document.

Department of Transport and Planning (DTP) State Planning Assessment and Facilitation (**Chair of TRG**)

Corangamite Catchment Management Authority

Country Fire Authority

DEECA Regions, Planning and Environmental Assessments

Department of Transport and Planning (Transport)

Environment Protection Authority

DPC First Peoples - State Relations

Golden Plains Shire Council

Heritage Victoria

Parks Victoria

Wadawurrung Traditional Owners Aboriginal Corporation (WTOAC)

EES draft scoping requirements – have your say



- The draft scoping requirements are available for comment from **24 April to 15 May 2026**
- Access the draft scoping requirements via the Engage Victoria website:
<https://engage.vic.gov.au/tall-tree-wind-farm-project-environment-effects-statement>
- They are also available on the DTP website:
<https://www.planning.vic.gov.au/environmental-assessments/browse-projects/referrals/tall-tree-wind-farm>
- Written submissions should be made using the Engage Victoria platform or sent via email to environment.assessment@transport.vic.gov.au.
- It is important that the community and stakeholders have their say about environmental matters relevant to the assessment of the proposed wind farm's potentially significant effects.
- DTP will consider all of your comments we receive when finalising the EES scoping requirements.

What happens next?

- The EES investigation to be completed by Acciona for technical review - the project proponent is responsible for preparing an adequate EES.
- The proponent will draft an EES Main Report to synthesise and communicate the EES investigations into potentially significant impacts and approach to mitigating them.
- Proponent's EES investigations and EES documents will need to address the scoping requirements
- Proponent's EES is prepared in close consultation with DTP and the agency-based Technical Reference Group
- Proponent needs to implement an EES consultation plan, for engaging with the public and stakeholders about the EES and its associated investigations
- In due course, the Minister for Planning will decide whether to authorise the completed EES for exhibition and public comment



QUESTIONS?

THANK YOU



Mobile Office Sessions

MOBILE OFFICE TIMES & LOCATIONS (April to August)

TUESDAY SESSIONS

TEESDALE

Time: 10:30am - 1:30pm

Location: Teesdale Community Hall,
Shelford-Bannockburn Rd, Teesdale,
VIC 3328

SHELFORD

Time: 4:30pm - 7:30pm

Location: Shelford Community Hall,
16 Mercer Street,
Shelford, VIC 3329

WEDNESDAY SESSIONS

MEREDITH

Time: 8:00am - 12:00pm

Location: Meredith Community
Centre, 4 Russell St,
Meredith, VIC 3333

LETHBRIDGE

Time: 2:00pm - 5:00pm

Location: Lethbridge Bluestone
Railway,
Lethbridge, VIC 3332

SATURDAY SESSIONS

BANNOCKBURN

Time: 9:00am - 12:30pm

Location: Bannockburn Cultural
Centre, 27 High St,
Bannockburn, VIC 3331

SESSIONS CALENDAR

MONTH	TUESDAY	WEDNESDAY	SATURDAY
April	7	8	11
May	5	6	9
June	2	3	13
July	7	8	11
August	4	5	8

*Engagement dates from September onwards will be provided later in the year