

GUNNING WIND FARM



Location: Approximately 35 kilometres north-east of Gunning and 70 km north-east of Canberra

Capacity: 46.5MW, equivalent to powering 36,000 households

Structure: 31 x 1.5MW turbines

Investment: \$147M AUD

Operational Since: 2011

LEADERS IN RENEWABLE ENERGY

ACCIONA Energía, the world's largest 100% renewable energy company without a fossil fuel legacy, has been operating in Australia for over two decades. Our unique 'build, own and operate' model demonstrates our long-term commitment to the regions where we work. We collaborate with landowners and regional communities to produce renewable energy, create jobs, and deliver a positive social impact. With a track record of successful projects across Australia and dedicated local teams, we deliver the best renewable energy projects in the country.



ABOUT THE PROJECT

The turbines are located on the privately-owned property Walwa, which is predominantly cleared pastoral land. The wind farm site continues to be used for grazing.

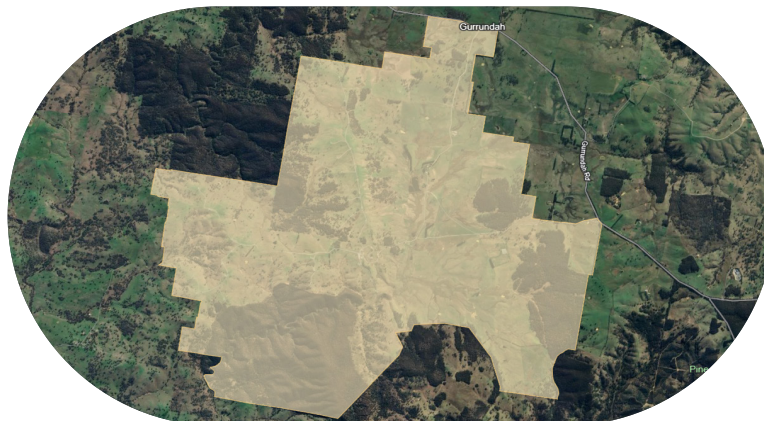
The Gunning Wind Farm has an electrical substation, access tracks to each turbine, an operation and maintenance facility and 17.4km of underground cabling. A 14km 132kV transmission line was also constructed to connect the wind farm to the existing Yass-Goulburn transmission line. The \$147m project continues to drive economic activity in the region.

CONNECTION TO COUNTRY

In the spirit of reconciliation, ACCIONA Energía acknowledges the Traditional Custodians of country throughout Australia and their connections to land, sea and community. We pay our respect to their Elders past and present and extend that respect to all Aboriginal and Torres Strait Islander people.

LOCATION OVERVIEW

The wind farm is located approximately 35 kilometres north-east of Gunning and 70 km north-east of Canberra.



COMMUNITY BENEFITS



LOCAL BENEFITS

Provides ongoing full-time positions on site, plus maintenance contracting opportunities. Local businesses benefit from the wind farm through ACCIONA Energía purchasing local goods and services. It produces clean energy equivalent to the consumption of around 36,000 homes annually and delivers a diversified income for host landowner. During construction, many local contractors were actively involved and over a 100 local jobs were created.



SMALL GRANTS & SCHOLARSHIPS

At ACCIONA Energía's Gunning Wind Farm, the Small Grants Program has been in place since 2011. Up to 2024, ACCIONA Energía has provided more than \$500,000 in financial support to community groups in the local region which benefited a wide range of projects.



DEDICATED COMMUNITY BENEFITS FUND

ACCIONA Energía through the Gunning Wind Farm, provides an annual scholarship of up to \$5000 for a local student wishing to undertake study at University or TAFE. Preference is given to those studying engineering, science or agricultural based courses. The Program commenced in 2013, and since then, ACCIONA Energía has provided scholarship funding totaling more than \$67,000 to students from the local area.

CONTACT US

ACCIONA Energía is committed to engaging with the local community surrounding the Gunning Wind Farm. We acknowledge the value of your feedback and questions. You can contact us via our free call community hotline, email or by post.

Post: PO Box 24110, Melbourne VIC 3001

Community information hotline: 1800 283 550

Email: gunning@acciona.com

Community Hub: community.acciona.com.au/gunning



Visit our Community Hub to join our mailing list!