



# Tall Tree Wind Farm Community Information Sessions

September 2025



# Session objectives and expectations

This session is being hosted to inform the community about updates to the proposed Tall Tree Wind farm and answer questions about the project.

The project team will try to respond to all questions to the best of our current knowledge. Those questions that we are unable to answer today will be taken on notice and responses emailed to all participants.

We ask that all participants of the online session communicate any questions or feedback respectfully.

The Tall Tree Wind Farm project team hopes to continue engaging with stakeholders through a range of channels as we develop this project.

The recording and presentation will be published on the Tall Tree Wind Farm Community Hub Page ([www.community.acciona.com.au/talltree](http://www.community.acciona.com.au/talltree))



Acciona Energía acknowledges the Traditional Custodians of country throughout Australia and their connections to land, sea and community.

We acknowledge the Wadawurrung People as the Traditional Custodians of the lands on which the Tall Tree Wind Farm is proposed to be located.

We pay our respect to Elders past and present and extend that respect to all Aboriginal and Torres Strait Islander peoples.



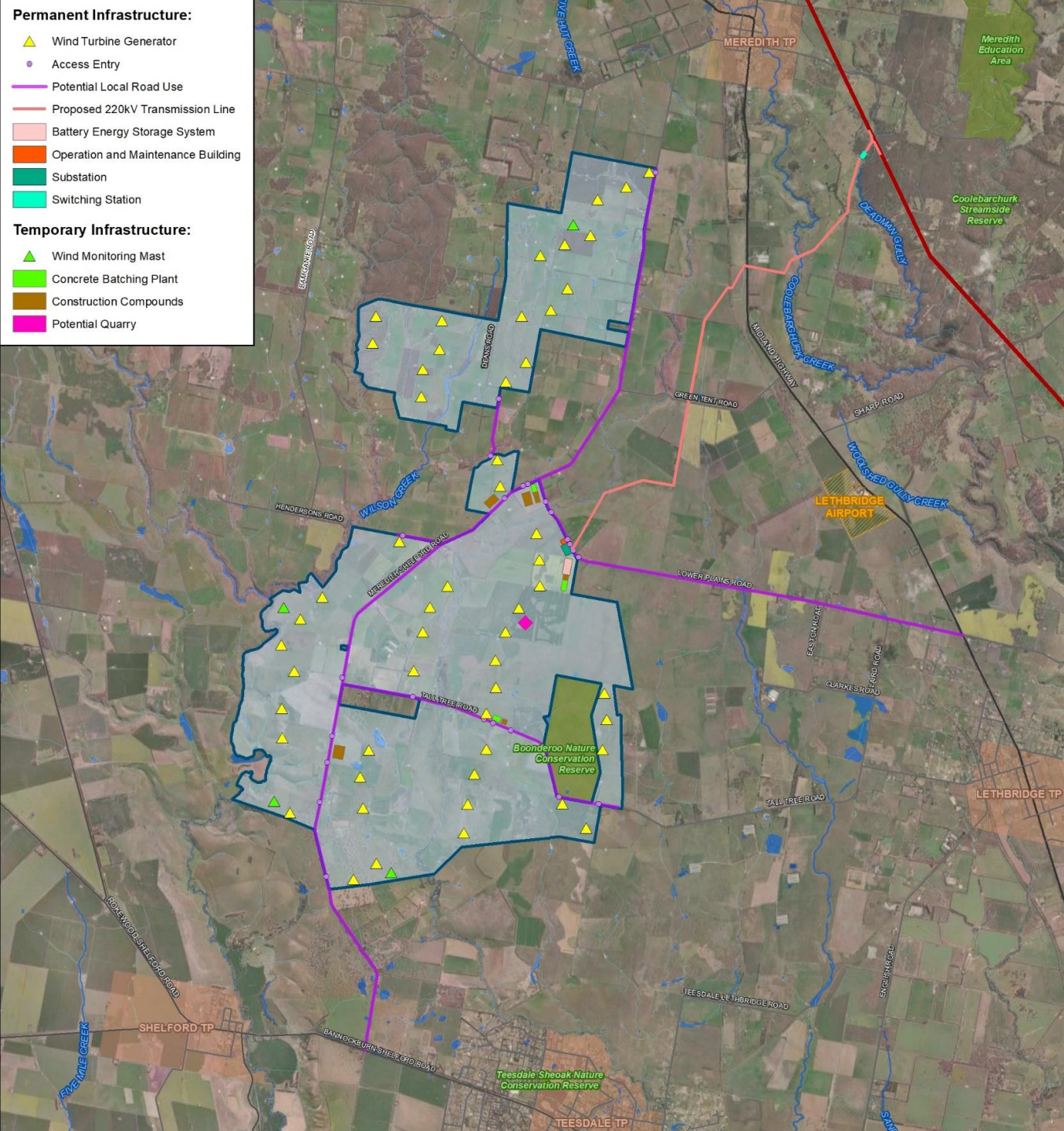
# AGENDA

- 1 Welcome and introductions
- 2 Project Update
- 3 Referral Presentation
- 4 Questions and Answers



# The Project

- 53 turbines
- 330MW wind turbine capacity
- 11.3 KM Transmission line
- Battery Energy Storage System (up to 800 MWhrs)
- Updated boundary, access
- 2027 anticipated Construction
- 2029 anticipated operations





# Referral Presentation

# Referral

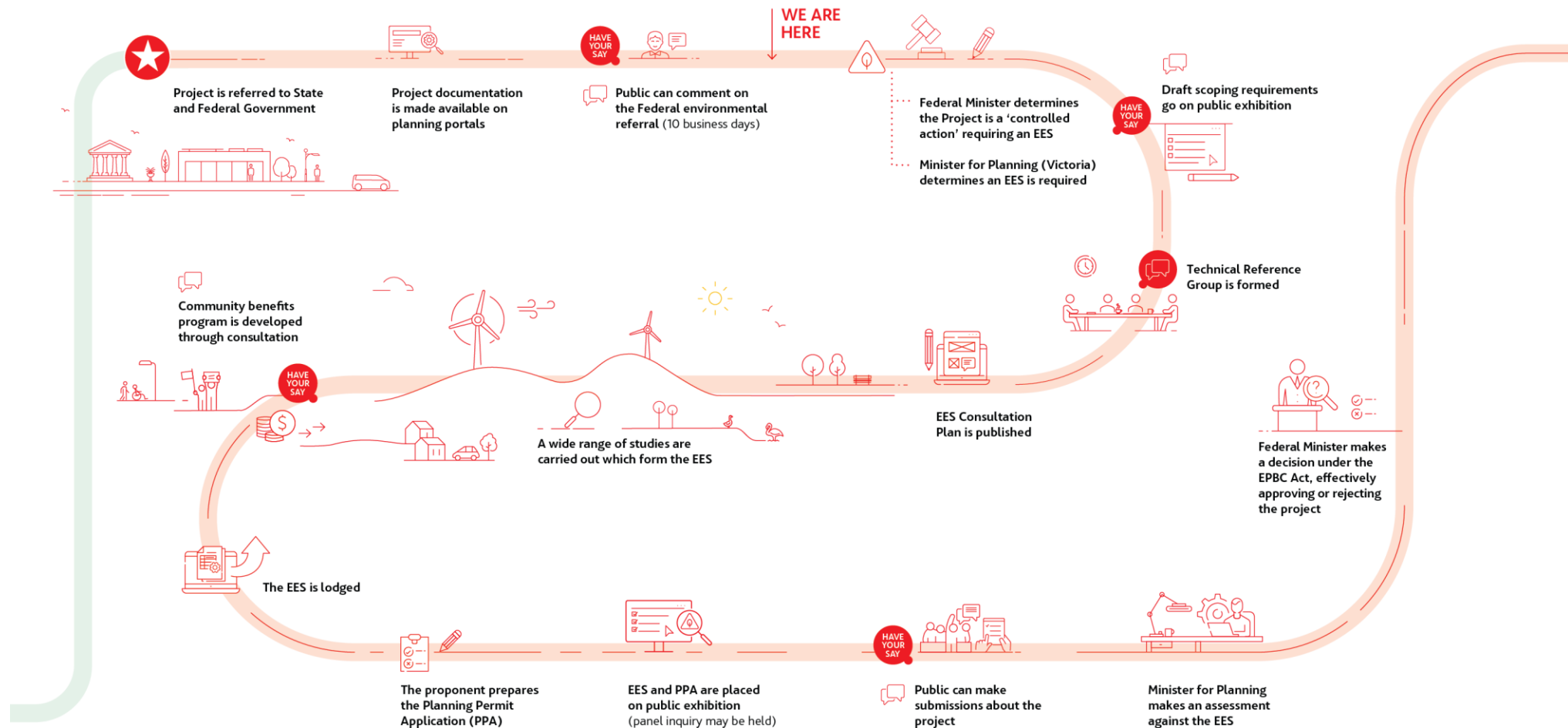
- **6 June 2025** – Project referred to the Department of Transport and Planning (DTP) for consideration under the Environment Effects Act 1978.
- **20 June 2025** - Environment Protection and Biodiversity Conservation Act 1999 (EPBC Act) referral submitted to the Commonwealth Department of Climate Change, Energy, the Environment and Water (DCCEEW).
- **Currently awaiting Minister decision** - The Victorian Planning Minister will decide if the project is required to complete an Environment Effects Statement.
- The EPBC Act allows **bilateral agreements** between the Australian and Victorian governments to consider approvals.
- Victoria conducts the assessment and reports to the Australian Government. **Both levels of government must approve a project** (or determine that no approval is required) before it can proceed.





# PROJECT TIMELINE\*

## REFERRAL AND ENVIRONMENT EFFECTS STATEMENT (EES)



\*Please note that this timeline assumes EES as an approval pathway. As of 25 August 2025, the Minister's decision is still pending on the pathway.



Community and stakeholder engagement continues throughout the life of the project



# Ecological Assessment

## Ecology and Heritage Partners

- Preliminary Field Surveys commenced in mid-2022
- Targeted Biodiversity Field Surveys from August 2023 (ongoing)

### List of Federal (EPBC) threatened species and communities:

- Golden Sun Moth
- Growling Grass Frog
- Striped Legless Lizard
- National Temperate Grassland of the Victorian Volcanic Plain (NTGVVP)

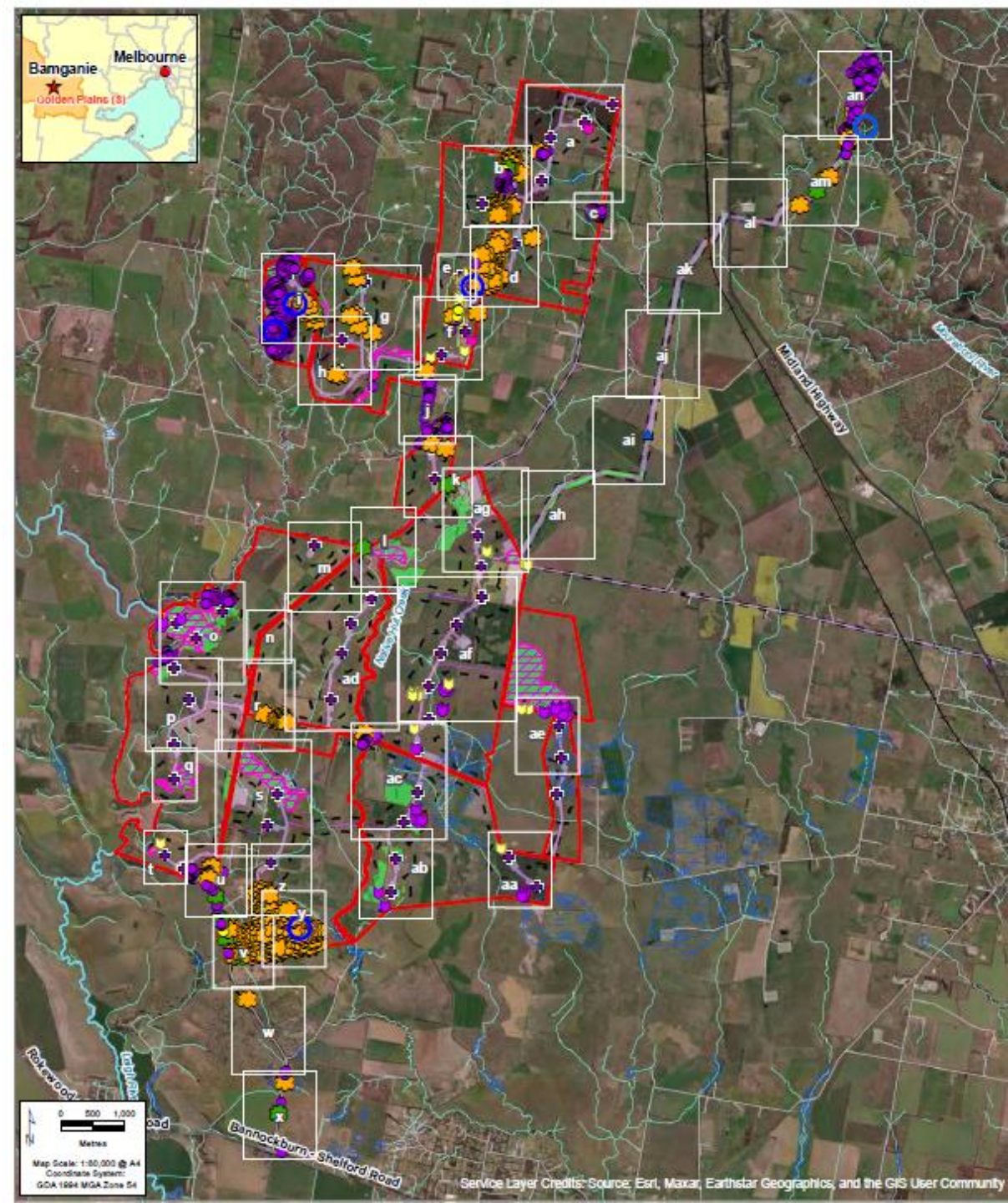
### List of State (FFG) threatened species:

- Eastern Bent-wing Bat
- Tussock Skink
- Yellow-bellied Sheath-tailed Bat
- Platypus

5 state significant flora recorded

- Austral Tobacco
- Small Scurf-pea
- Tough Scurf-pea
- Fragrant Saltbush
- Small-flowered Wallaby-grass

- Twelve ecological communities - Mix of Forest, Grassland, Woodland and Shrubland



# Ecological Assessment

## Ecology and Heritage Partners



### Surveys in progress/ proposed

- Bird utilisation survey
- Brolgas
- Flora Surveys
- Victorian Grassland Earless Dragon
- Targeted Species surveys

### Mitigation Measures undertaken and ongoing:

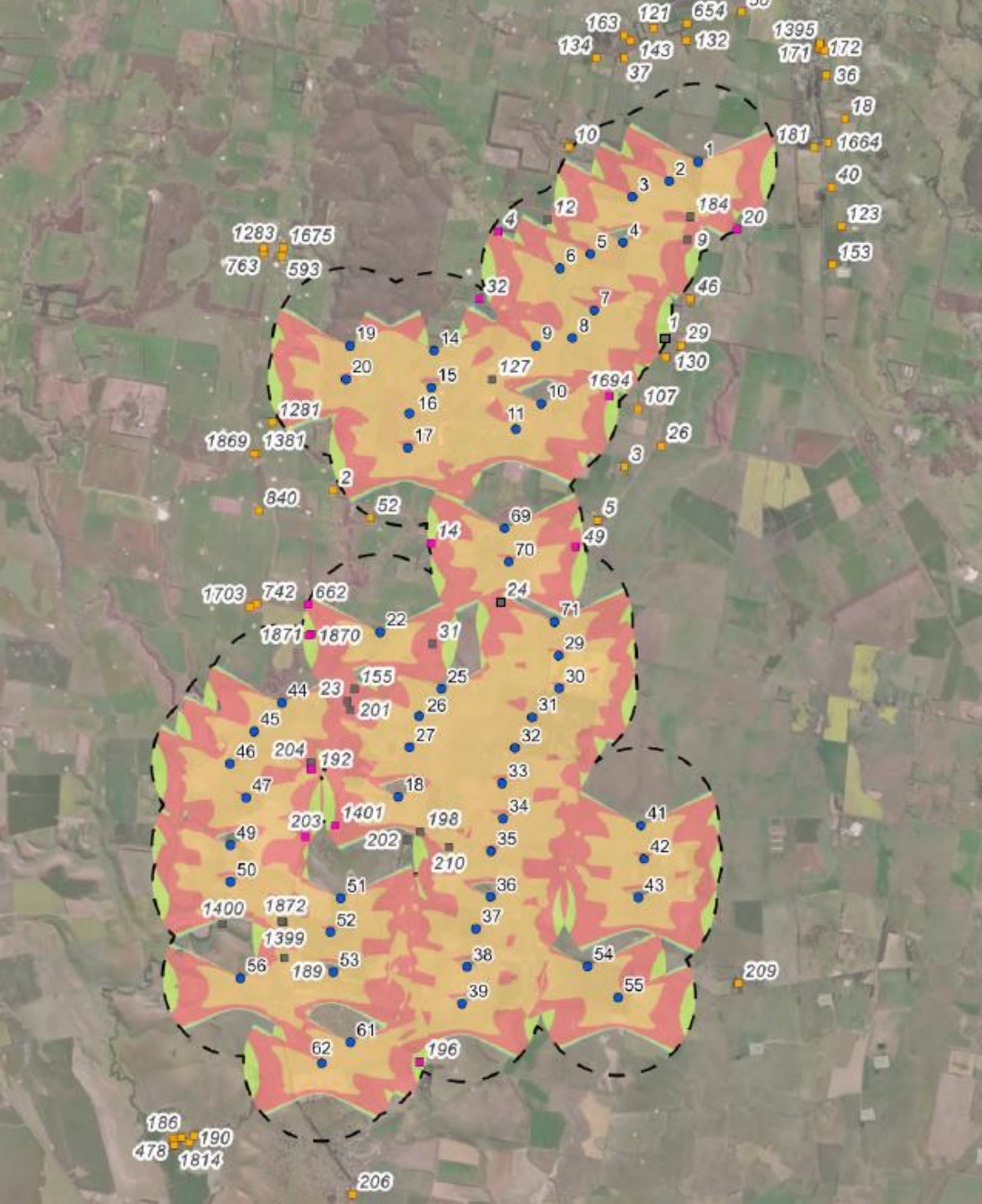
- Redirecting access tracks
- Buffer Zones
- Removal of infrastructure
- Design review to further minimize and avoid impacts where possible



# Shadow Flicker

## Moir Studio

- Zone of **Visual Influence** of Shadows 265 x 4.3 m (maximum blade chord) = **1,139.5 m**
- Assessment is based on a **maximum impact scenario**, assuming turbines operate continuously; the turbine is always perpendicular to the sun's rays; and there are no clouds or other obstructions.
- The worst-case approach **overestimates actual shadow flicker**
- **6** non-associated dwellings have the **potential** to experience shadow flicker over 30hr per year in the absence of these
- **Operational controls** can be implemented to **prevent** shadow flicker during identified periods of potential exceedance
- **Vegetation** is likely to limit visibility of turbines. Site inspections are undertaken at dwellings to ground truth the aerial imagery.

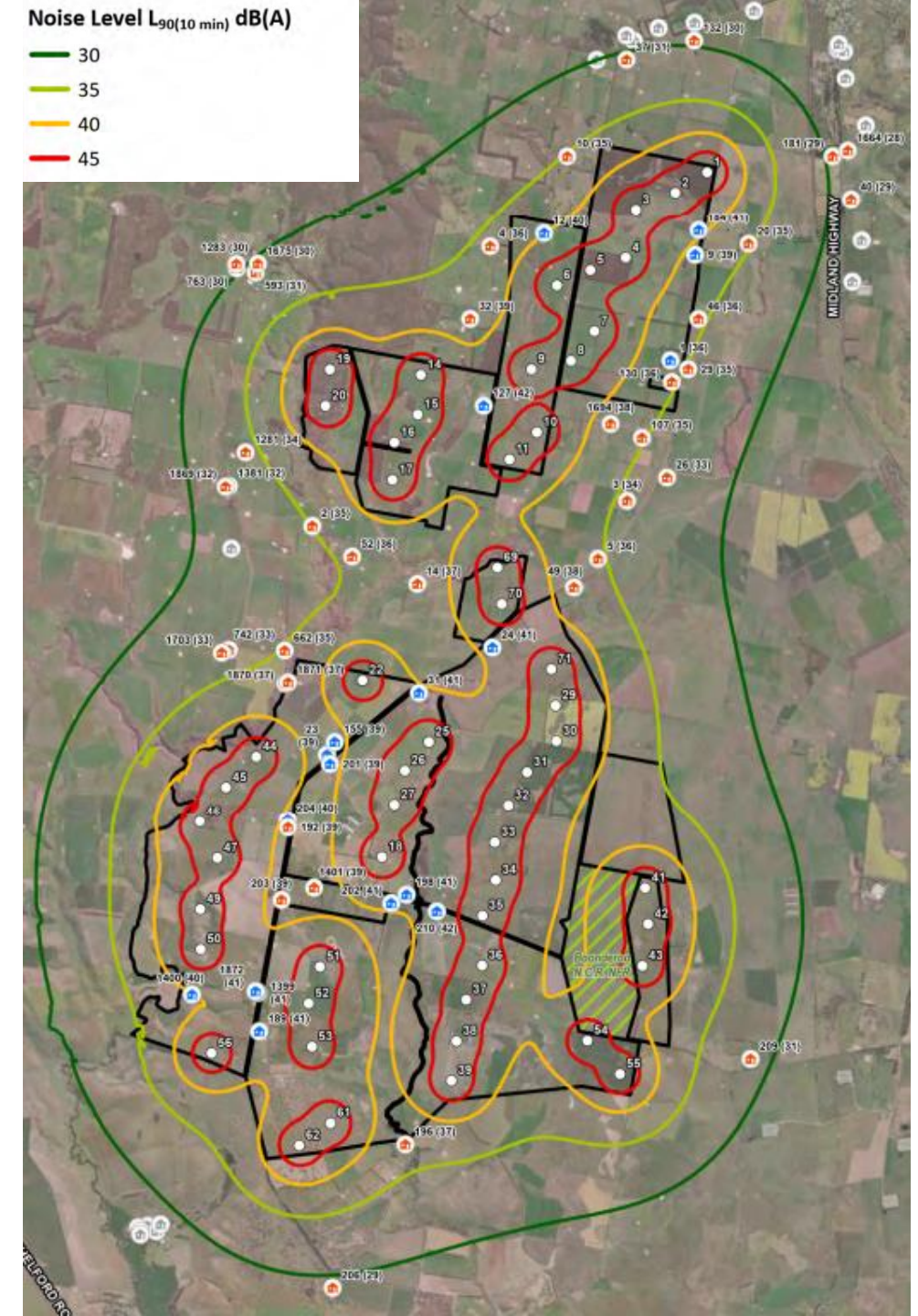




# Noise Impact Assessment

## Environmental Resources Management (ERM)

- Dwellings located **within 2km** from turbines are assessed, Dwellings located further away are anticipated to experience **lower noise** impact than at the assessed dwellings.
- The predicted results indicate **compliance at 1.5m** (expected compliance monitoring height – see map) for all dwellings; and **two minor** exceedances at non-associated dwellings at a 4m receptor height.
- **Background noise** monitoring **will** be undertaken in the next round of assessments, as required by EPA regulations.

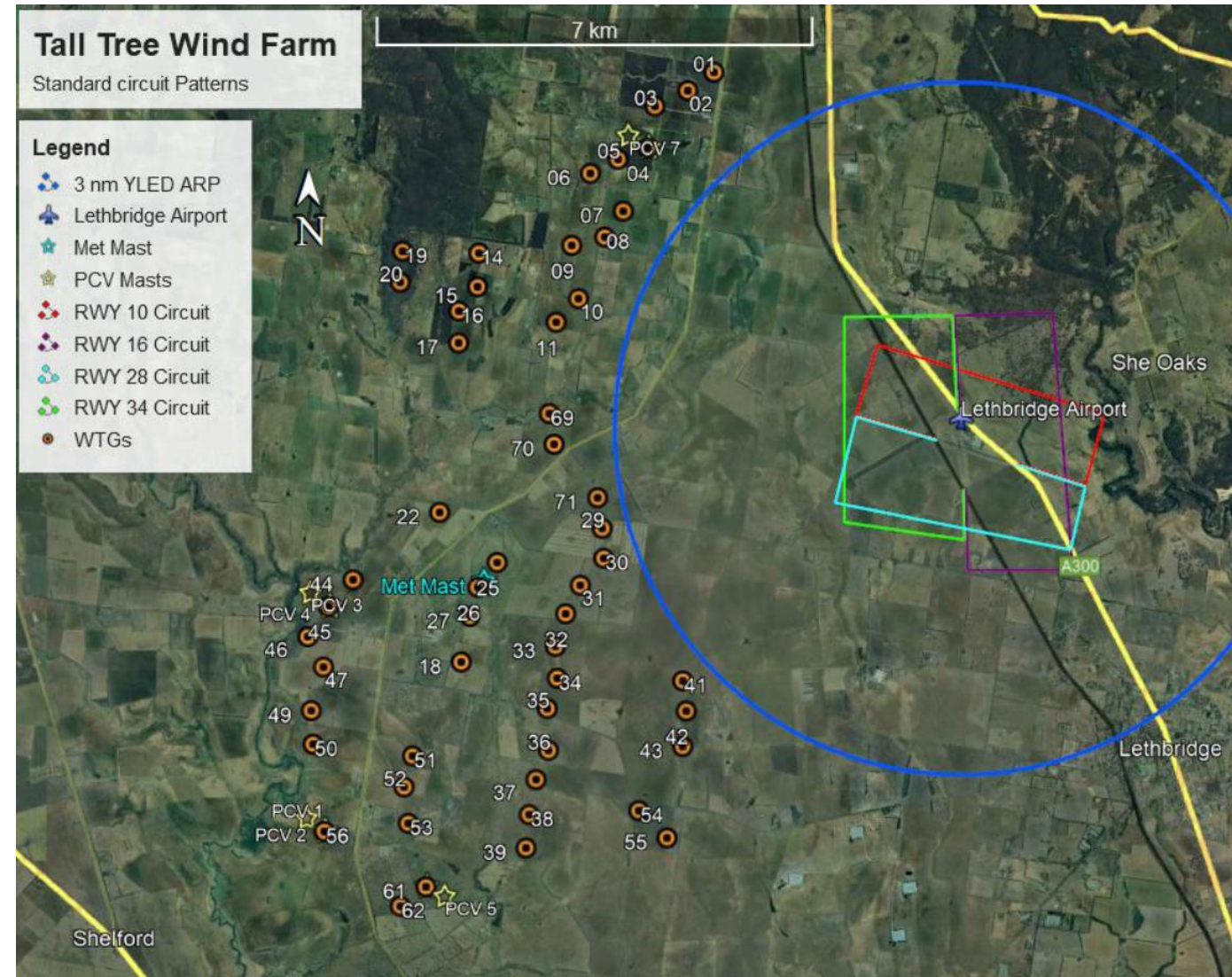




# Aviation Impact Assessment

## Aviation Projects

- The Draft Aviation Impact Assessment (AIA) assesses potential aviation **impacts**, provides aviation **safety advice** with respect to relevant requirements of air safety regulations and procedures, and informs and documents **consultation** with relevant aviation agencies.
- AIA report includes an **Aviation Impact Statement** (AIS) as required by Airservices Australia, and a qualitative **risk assessment**
- Consultation with aviation authorities and stakeholders (including Lethbridge Airport) is ongoing, and the Draft AIA will be **updated** both to document this consultation, and incorporate any necessary revisions



# Landscape and Visual Impact Appraisal

## Hansen Partnership

- Preliminary Study – Photomontages prepared for Viewpoints at Teesdale, Meredith, Shelford, Lethbridge and Bunjil's Lookout (Maude)
- 15km Study Area from turbines
- Further assessment, including at residential locations, will be conducted during the next stage of the project investigations

Indicative view from Bunjil's Lookout Maude





# Heritage Assessment

## Environmental Resources Management

### First Nations Heritage

- Traditional Owners are **Wadawurrung**
- **Five Aboriginal places registered** within the project area

### Next Steps:

- **Cultural Values** Assessment undertaken by the **Traditional Owners**
- Mandatory Cultural Heritage Management Plan (CHMP)

### Historical Heritage

- **One** registered **historical heritage** place within the disturbance footprint of the project
- **No** Victorian Heritage Register places, Commonwealth Heritage Sites, or Heritage Overlays within the disturbance footprint

### Next Steps:

- Avoidance **where possible**
- **If required** a Historical heritage Assessment will be completed

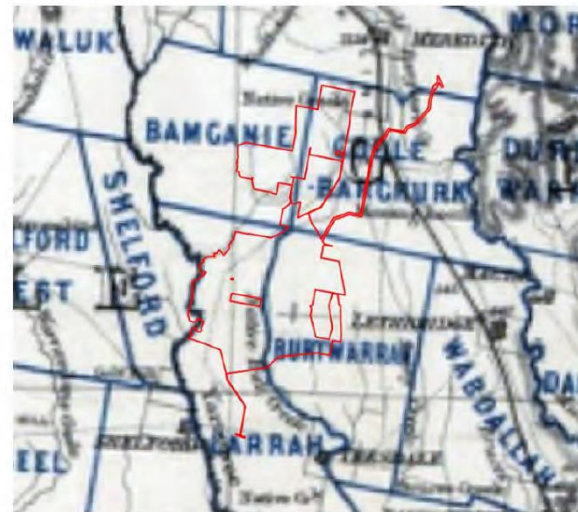
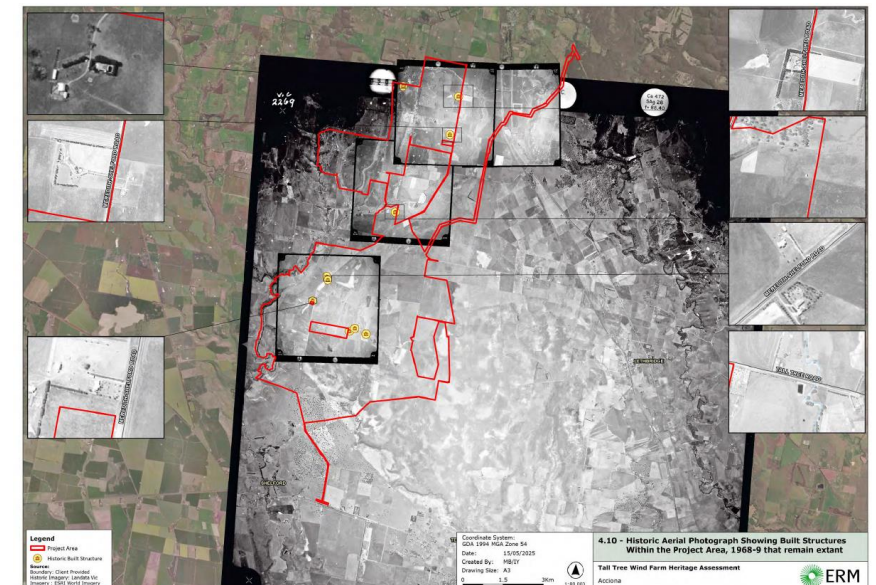


FIGURE 4-1 MAP OF VICTORIA SHOWING PARISH DIVISIONS. PROJECT AREA OUTLINED IN RED (SOURCE: NATIONAL LIBRARY OF AUSTRALIA)



# What we heard!

Frequently asked Questions  
from the  
in-person sessions



# QUESTIONS?

---



# THANK YOU

